

Temperature transmitter is an integral element of temperature sensor, available also as a separate component. It converts temperature sensor signal to analogue 4÷20mA, voltage 0÷10V or different signal. Transmitter can be placed directly in connection head or on TS-35mm rail.

### Specification

#### Characteristic

- with HART Communication Protocol
- mounting in connection head BA
- 50-point linearisation
- intrinsically safe MESO-HX ATEX II 1G Ex ia IIC T4 / T5 / T6

#### Input

RTD: 3-, 4-wire  
 TC: B, E, J, K, L,N, R, S, T, U acc. to operating range  
 Pt100: -200÷1000°C  
 Pt1000: -200÷200°C  
 Ni100: -60÷250°C  
 Ni1000: -10÷150°C  
 resistance: 0÷2000Ω  
 voltage: -10÷500 mV

#### Output

4÷20 mA; 20÷4 mA

#### Measuring range

Pt100 min. -10°C  
 TC, mV: min. 2 mV  
 resistance inputs: min. 10Ω

#### Zero point adjustment

in full range

#### Accuracy

0,1% of range

#### Response time

1s

#### Galvanic isolation

1500V AC for 1 min.

#### Max. loop resistance

$R_L \max = (U_{\text{supply}} - 10) / 0,022 [\Omega]$   
 $R_L \max = (U_{\text{supply}} - 12) / 0,022 [\Omega]$  - Ex version

#### Lead wire connection

<2,5 mm<sup>2</sup>

#### Power supply

10÷42V DC; 12÷30V DC Ex version

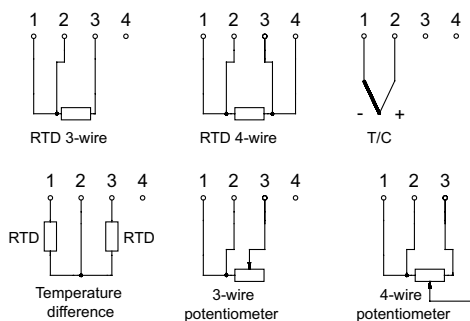
#### Operating conditions

temperature: -40÷85°C  
 humidity: up to 98% RH non-condensing

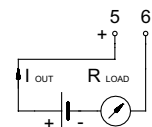


### CONNECTION SCHEMES

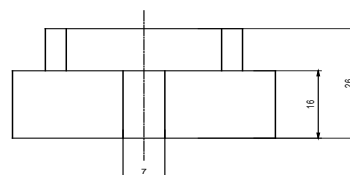
#### Input connections:



#### Output connections:



#### Dimensions:



**Product code**

1	<input type="text"/>	<b>Transmitters version</b>	
		<b>X</b>	Transmitters version Ex
2	<input type="text"/>	<b>Temperature range</b>	
		<b>(0÷1000)°C</b>	(0÷1000)°C
		other parameters acc. to requirements	
3	<input type="text"/>	<b>Equipment</b>	
		<b>A</b>	with adapter for 35 mm rail mounting

1      2      3

MESO-H -  -  -

Ordering example:

**Transmitter MESO-HX**